

ASSETTRAC™

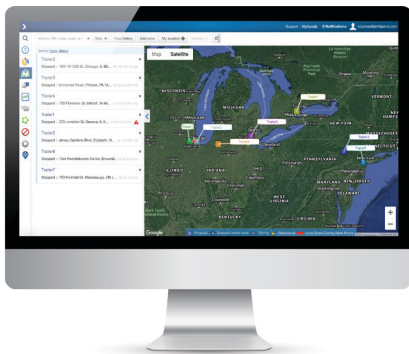
Track your assets, no tools required!

Cellular tracking with integrated power source.



PCT's best-in-class hardware is now integrated into MyGeotab!

Ideal for any powered or non-powered assets. AssetTrac™ is a 4G LTE tracking solution designed for the toughest conditions.



Manage your assets in the Geotab ecosystem



AssetTrac™



AssetTrac™ Installed on asset

Solution Highlights

- Manage and view your assets in the Geotab ecosystem
- Real-time visibility and simple geofencing
- Automated alerts configurable in MyGeotab
- 3+ years of operation, up to 10,000 reports
- Customizable behaviour
- Flawless operation in the harshest temperatures (-22°F to 158°F)
- Hourly reporting when in motion
- 1 report per day when parked

Powerful Cost Saving Tools

- Do more with fewer assets
- Covert installations help eliminate asset theft and loss



Theft Recovery



GPS, Geofencing, Route Tracking



Waterproof



2 Minute Installation

833.213.5839
www.phillips-connect.com



TRANSPORTATION TECHNOLOGIES, REIMAGINED

ASSETTRAC™

Part# 77-6950



Cellular Technology

LTE Cat 1 (bands 2, 4, 12)
HSPA Fallback Bands 2, 5
Integrated high sensitivity antenna
Auto register to packet network

GPS Functionality

Channels: 56
Tracking Sensitivity: -162 dBm
Acquisition Sensitivity: -148 dBm
Location Accuracy: 2.5 CEP

Power Management

Battery Capacity: 29Wh
Battery Type: 3 x AA Li-SOCI2
Power Management Modes:

- Continuous Tracking
- Listening Mode
- Deep Sleep

Power Consumption:

- Deep Sleep: < 200uW
- Energy Per Report: < 4mWh

Environmental

Operation Temperature: -22°F to 158°F (-30°C to 75°C)
Storage Temperature: -40°F to 113°F (-40°C to 45°C)
Operation Humidity: 20% to 90% (non-condensing)
Storage Humidity: 10% to 95% (non-condensing)

Physical

IP67 Enclosure
Dimensions: 5.51in x 3.7in x .79in (140mm x 94mm x 20mm)
Weight: 0.51lbs (231g)
Internal Cellular and GPS Antenna
Optional external 12V power adapter available

Approvals

FCC 47 CFR Part 15, Part 22, and Part 24
PTCRB Certification

833.213.5839
www.phillips-connect.com

CD1055E_200730_REV1



TRANSPORTATION TECHNOLOGIES, REIMAGINED