

EZTRAC™ HW

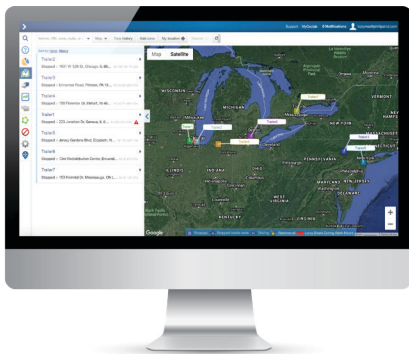
4G LTE Asset Tracker

Installs in less than 10 minutes!



PCT's best-in-class hardware is now integrated into MyGeotab!

Ideal for construction equipment, trailers, and boats. EZTrac™ HW is an asset tracking solution designed for the toughest conditions.



Manage your assets in the Geotab ecosystem

Solution Highlights

- Manage and view all of your assets in the Geotab ecosystem
- Real-time visibility and simple geofencing
- Automated alerts configurable in MyGeotab
- Flawless operation in the harshest temperatures (-22°F to 167°F)
- 2 minute reporting when in motion

Powerful Cost Saving Tools

- Locate equipment in an instant
- Optimize equipment utilization
- Record and measure engine hours
- Analyze battery voltage and performance



EZTrac™ HW



EZTrac™ HW Installed on asset



Theft Recovery



GPS, Geofencing, Route Tracking



Waterproof



10 Minute Installation

833.213.5839
www.phillips-connect.com



TRANSPORTATION TECHNOLOGIES, REIMAGINED

EZTRAC™ HW

Part# 77-6930



Cellular Technology

LTE Cat 1

HSPA Fallback Bands 2, 5 (TMO)

Integrated high sensitivity antenna

Auto register to packet network

GPS Functionality

Channels: 56

Tracking Sensitivity: -162 dBm

Acquisition Sensitivity: -148 dBm

Location Accuracy: 2.5 CEP

Power Management

Battery Capacity: 80mAh

Operating Voltage: 6V – 28V

Voltage Over-protected TVS 36V and Fused

Power Consumption:

- Sleep: < 60mW
- Tracking: < 400mW

Environmental

Operation Temperature: -4°F to 140°F (-20°C to 60°C)

Storage Temperature: -40°F to 185°F (-40°C to 85°C)

Operation Humidity: 20% to 90% (non-condensing)

Storage Humidity: 10% to 95% (non-condensing)

Physical

Dimensions: 3.6in x 1.55in x .62in (91mm x 39.4mm x 15.7mm)

Weight: .56lbs (255g)

Approvals

FCC 47 CFR Part 15, Part 22, and Part 24; IC

RoHS2 and WEEE

PTCRB Certification

833.213.5839
www.phillips-connect.com

CD1055D_200730_REV1



TRANSPORTATION TECHNOLOGIES, REIMAGINED